



ಬೃಹತ್ ಬೆಂಗಳೂರು ಮಹಾನಗರ ಪಾಲಿಕೆ  
Bruhat Bengaluru Mahanagara Palike



# BBMP COVID-19 WAR ROOM 20.09.2022



# OVERVIEW OF COVID-19 IN BENGALURU



## CASE TRENDS

ACTIVE CASES **2,366**

### Confirmed Cases

**220**

18,70,474 #

### Recovered Cases

**264**

18,51,121 #

### Death Cases

**0**

16,987 #



## HOSPITALIZATION

**58**

### ICU – V

-

### ICU

**18**

### HDU

**6**

### General

**34**

INCLUDES GOVT. QUOTA AND PRIVATE WALK-IN HOSPITALIZATION



## VACCINATION

**1,816**

2,04,32,020 #

### First Dose

**124**

96,72,831 #

### Second Dose

**229**

94,67,448 #

### Precaution Dose

**1,463**

12,91,741 #



## TRIAGING

### MTU

**10**

### Tele Triage

**209**



## ACTIVE CLUSTERS

**3**

### Budding Clusters (<5 Cases)

**3**

### Clusters (> 5 cases)

**0**



## TESTING

**13,024**

3,17,54,049 #

### RAT

**2,751**

### RTPCR

**10,273**

Positivity : 1.74%

\*FOR LAST 7 DAYS

# : indicates cumulative numbers till date



# ABSTRACT OF COVID-19 SCENARIO IN BENGALURU



	MALE			FEMALE			TRANSGENDER			TOTAL		
	Last 24 Hours	Last 7 Days	Cumulative	Last 24 Hours	Last 7 Days	Cumulative	Last 24 Hours	Last 7 Days	Cumulative	Last 24 Hours	Last 7 Days	Cumulative
<b>Positive Cases</b>	120	838	11,02,489	100	656	7,67,093	0	0	196	220	1,494	18,70,474
<b>Recovered Cases</b>	139	882	10,90,150	125	668	7,60,877	0	0	187	264	1,550	18,51,121
<b>Death Cases</b>	0	1	10,759	0	0	6,224	0	0	4	0	1	16,987
<b>Total Tests Done</b>	<b>In Last 24 hrs. : 13,024</b>			<b>In last 7 days : 85,734</b>			<b>Cumulative : 3,17,54,049</b>					
<b>Vaccine Doses Administered</b>	<b>In Last 24 hrs. : 1,816</b>			<b>In last 7 days : 22,325</b>			<b>Cumulative : 2,04,32,020</b>					
<b>ACTIVE CASES</b>									<b>2,366</b>			

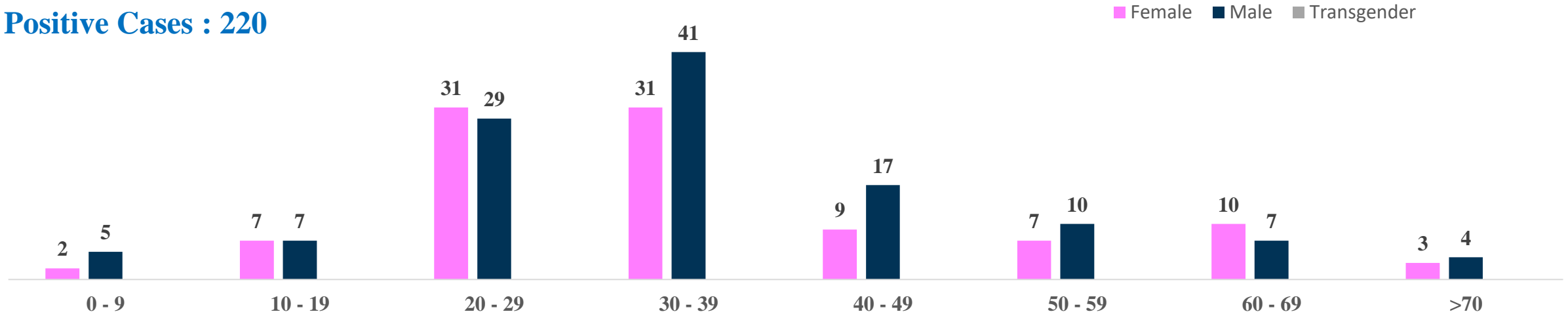
\*Covid deaths occurred today : 00 | Covid deaths occurred beyond last 24hrs., reported today : 00



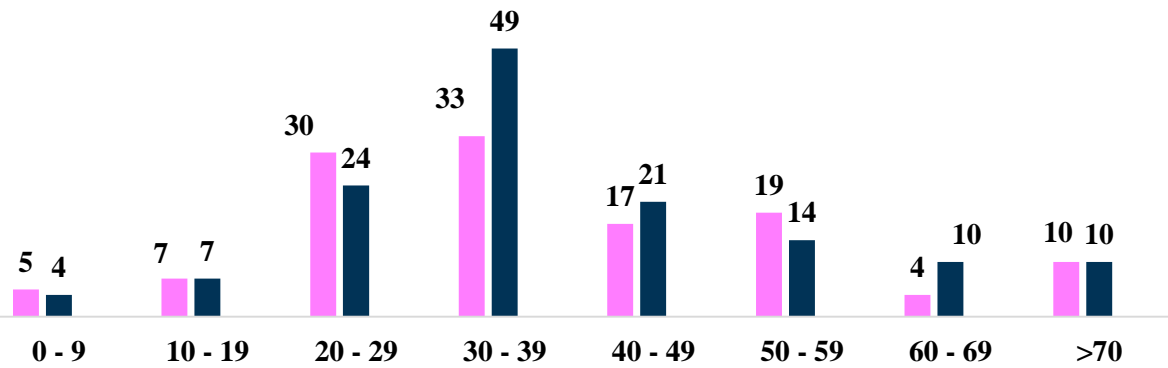
# LAST 24 HOURS AGE GROUP AND GENDER WISE DISTRIBUTION



## Positive Cases : 220



## Recovered Cases : 264

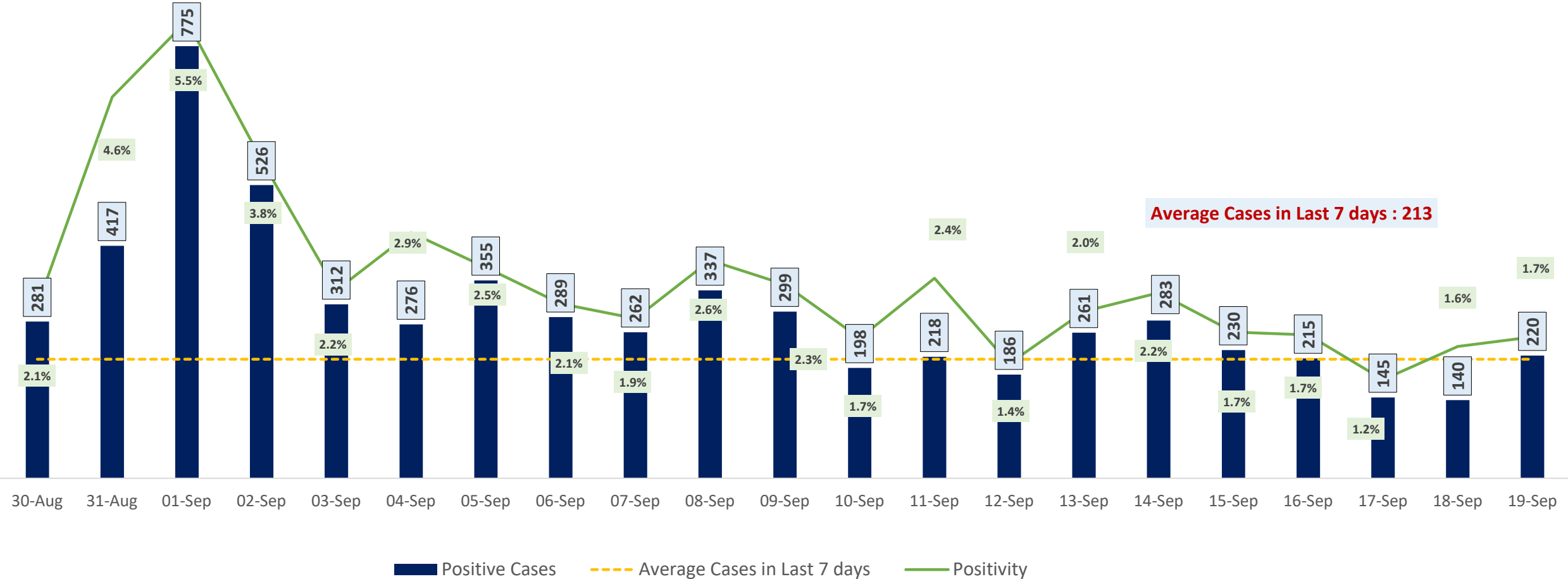


## Death Cases : 0

0 to 9 10 to 19 20 to 29 30 to 39 40 to 49 50 to 59 60 to 69 >=70



# POSITIVITY RATE OF BENGALURU – LAST 21 DAYS

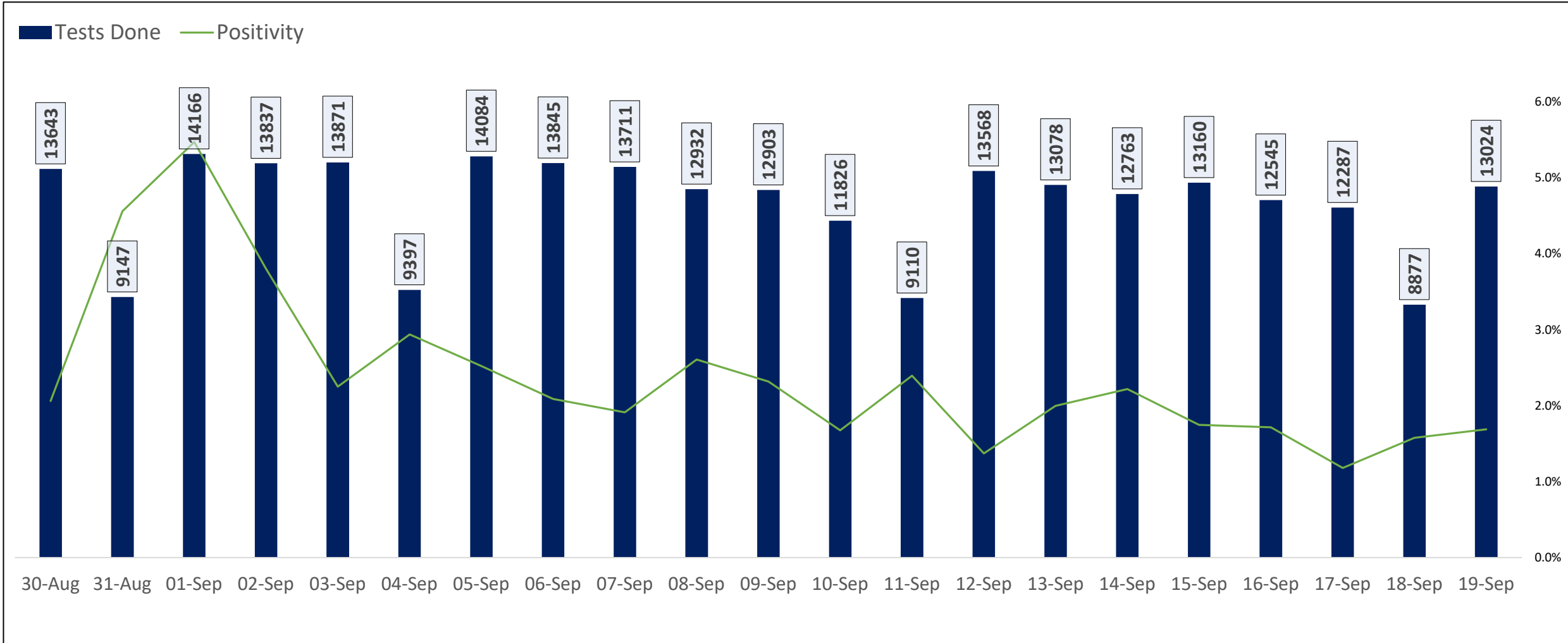




# TESTING TRENDS IN BENGALURU



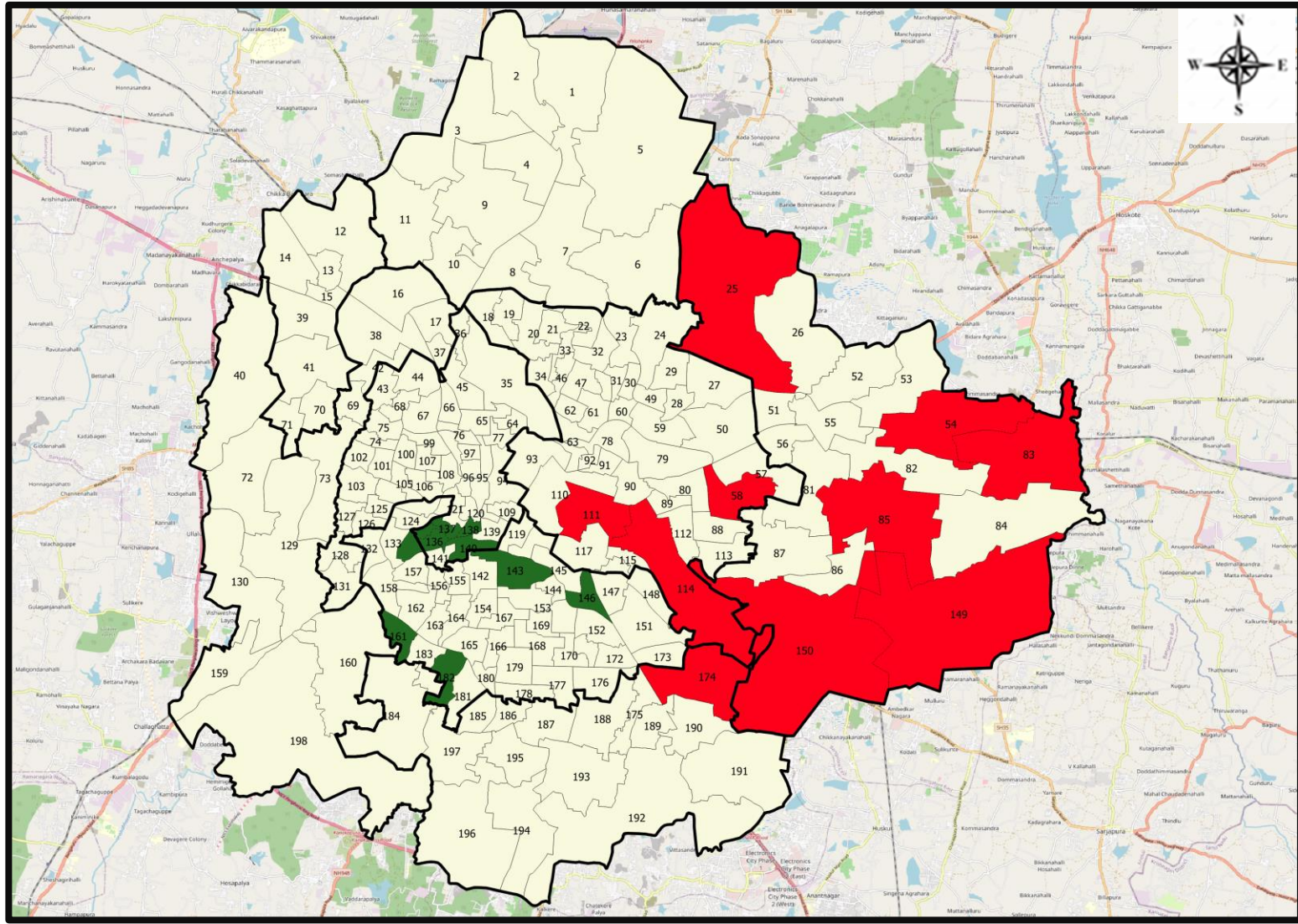
Total Test Conducted Till Date	Test Conducted Last 24 hours	Last 7 Days Average
3,17,54,049	13,024	12,248







# BENGALURU URBAN MAP SHOWING TREND OF POSITIVE CASES IN LAST 7 DAYS



### Top 10 wards reporting highest number of positive cases in last 7 days

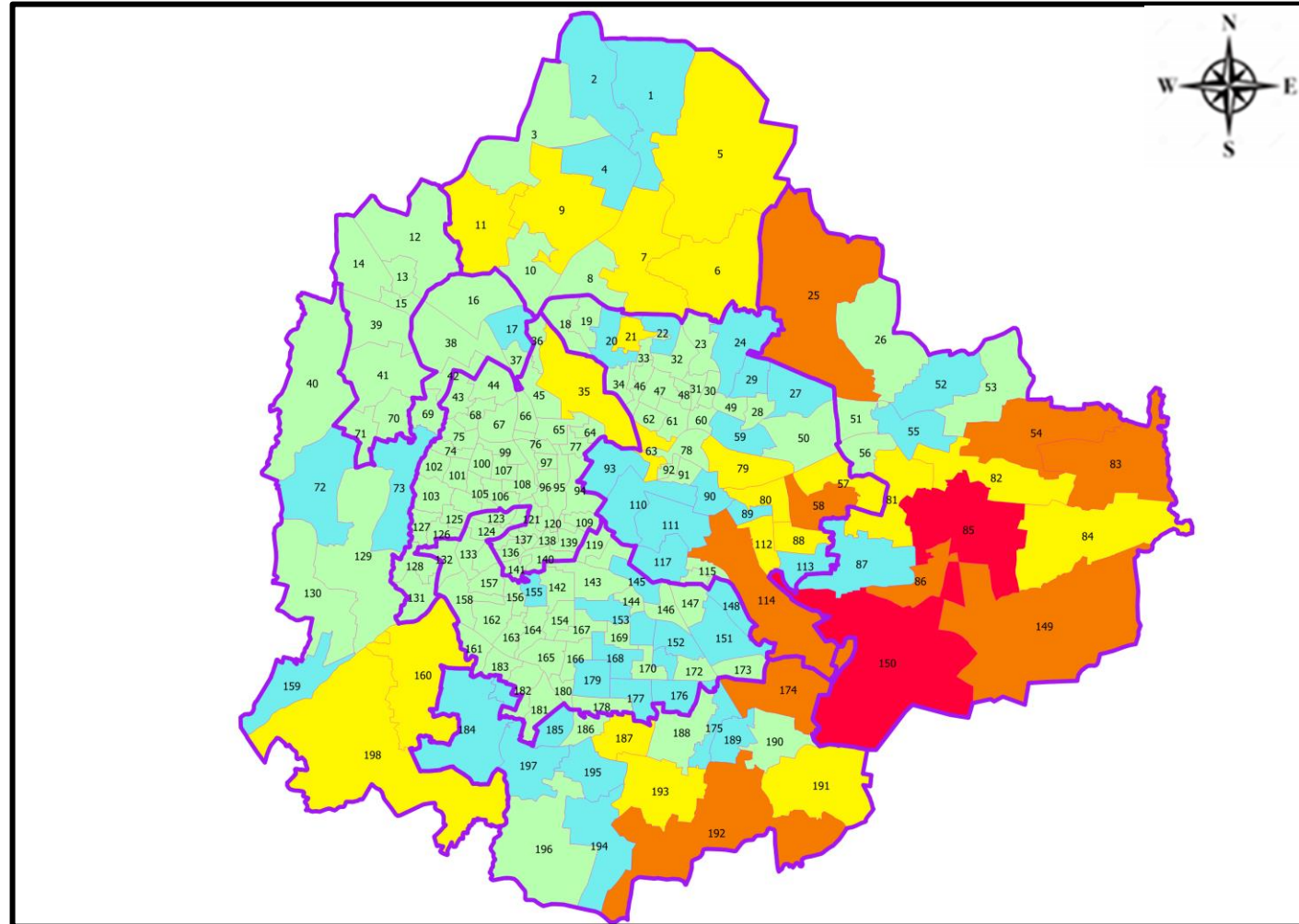
Ward No.	Ward Name	Daily Cases Average
150	Bellanduru	19
85	Dodda Nekkundi	9
149	Varthuru	6
25	Horamavu	6
83	Kadugodi	6
58	New Tippasandra	5
174	HSR Layout	5
111	Shantala Nagar	5
54	Hudi	4
114	Agara	4







### Top 10 wards reporting least number of positive cases in last 7 days

Ward No.	Ward Name	Daily Cases Average
182	Padmanabha Nagar	0
161	Hosakerehalli	0
146	Lakkasandra	0
143	Vishveshwara Puram	0
140	Chamrajapet	0
138	Chalavadipalya	0
137	Rayapura	0
136	Jagajivanram Nagar	0
135	Padarayanapura	0
134	Bapuji Nagar	0



# BENGALURU MAP SHOWING INTENSITY OF POSITIVE CASES IN LAST 7 DAYS



-  Level 1 : 0 to 5 Cases
-  Level 2 : 5 to 15 Cases
-  Level 3 : 15 to 25 Cases
-  Level 4 : 25 to 50 Cases
-  Level 5 : More than 50 Cases
-  Zone Boundaries



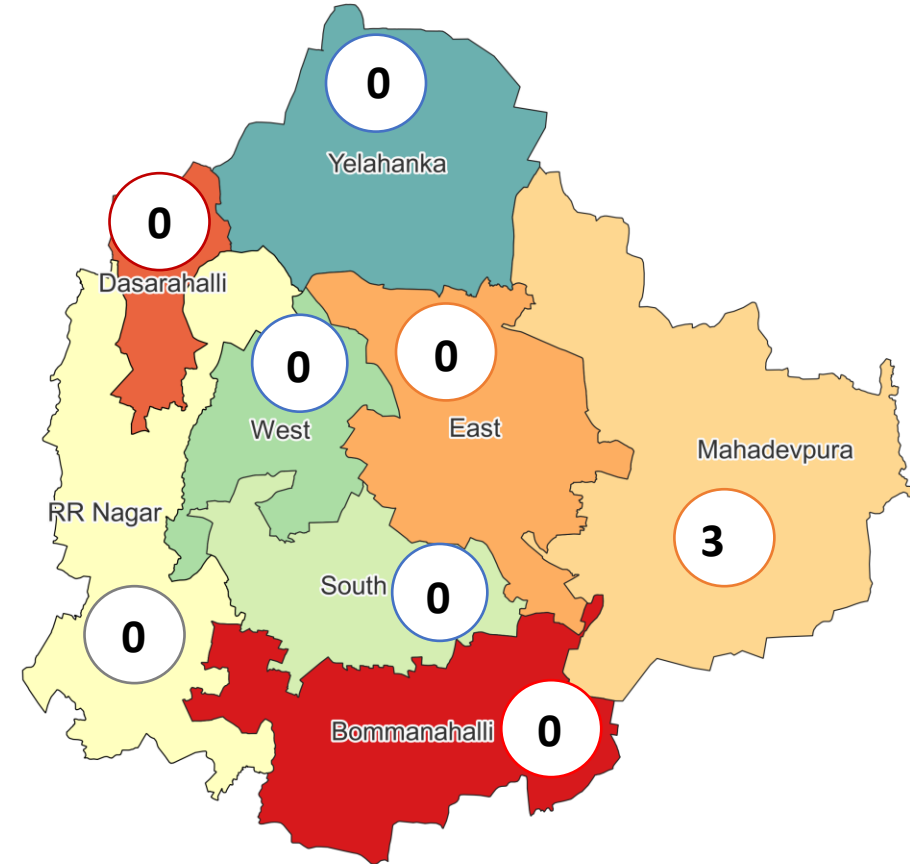


# CLUSTER DETAILS



Zone Name	TOTAL CLUSTERS	Budding Clusters	Clusters	Outbreaks
		Less Than 5 Cases	5 To 14 Cases	More Than 14 Cases
BOMMANAHALLI	0 (-)	0 (-)	0 (-)	0 (-)
DASARAHALLI	0 (-)	0 (-)	0 (-)	0 (-)
EAST	0 (-)	0 (-)	0 (-)	0 (-)
MAHADEVPURA	3 (-)	3 (-)	0 (-)	0 (-)
RR NAGAR	0 (-)	0 (-)	0 (-)	0 (-)
SOUTH	0 (-)	0 (-)	0 (-)	0 (-)
WEST	0 (-)	0 (-)	0 (-)	0 (-)
YELAHANKHA	0 (-)	0 (-)	0 (-)	0 (-)
<b>TOTAL</b>	<b>3 (-)</b>	<b>3 (-)</b>	<b>0 (-)</b>	<b>0 (-)</b>

## Total Active Clusters



### Types of Clusters

Zone Name	Apartments/ Villa	Individual House	Hostels/Quarters	Others	Schools/Colleges
BOMMANAHALLI	0 (-)	0 (-)	0 (-)	0 (-)	0 (-)
DASARAHALLI	0 (-)	0 (-)	0 (-)	0 (-)	0 (-)
EAST	0 (-)	0 (-)	0 (-)	0 (-)	0 (-)
MAHADEVPURA	3 (-)	0 (-)	0 (-)	0 (-)	0 (-)
RR NAGAR	0 (-)	0 (-)	0 (-)	0 (-)	0 (-)
SOUTH	0 (-)	0 (-)	0 (-)	0 (-)	0 (-)
WEST	0 (-)	0 (-)	0 (-)	0 (-)	0 (-)
YELAHANKHA	0 (-)	0 (-)	0 (-)	0 (-)	0 (-)
<b>TOTAL</b>	<b>3 (-)</b>	<b>0 (-)</b>	<b>0 (-)</b>	<b>0 (-)</b>	<b>0 (-)</b>

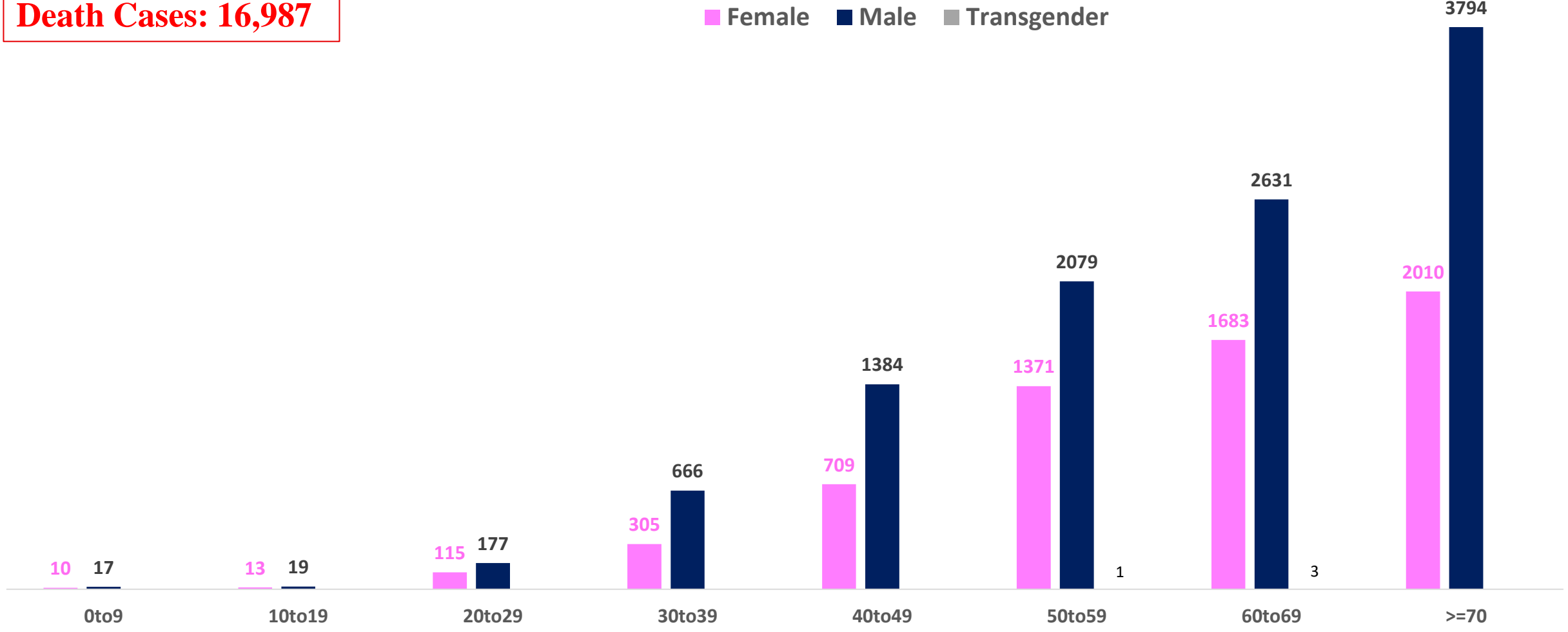
▲▼ : Shows increase and decrease in numbers as compared to previous day



# AGE AND GENDER WISE DISTRIBUTION OF DEATH CASES



**Death Cases: 16,987**





# COVID-19 SCENARIO IN BENGALURU AND OTHER METROPOLITIAN CITIES



CITY NAME	Positive Cases	Active Cases	Recovered	Deceased	Vaccine Doses Administered
New Delhi	20,02,452	514	19,75,439	26,499	3,70,62,014
Bengaluru*	18,70,474	2,366	18,51,121	16,987	2,37,02,003
Mumbai	11,48,193	1,009	11,27,459	19,725	2,20,88,114
Chennai	7,89,277	2,346	7,77,862	9,069	1,13,05,124

Source : <https://dashboard.cowin.gov.in/> at 4:30pm (20.09.2022)  
Source : <https://www.covid19bharat.org/> at 4:30pm(20.09.2022)

\*includes BBMP & Bengaluru Urban



# SNAPSHOT OF COVID-19 CASES IN BENGALURU URBAN



**Total Wards With  
< =10 Cases\* :  
151**

**Tests Conducted  
on 19.09.2022:  
13,024**

**Recovery  
Rate\*:  
98.97%**

**Total  
Active Cases :  
2,366**

**Total Vaccinated  
on 19.09.2022:  
1,816**

**Positivity  
Rate\* :  
1.74%**

**Active  
Rate\*:  
0.13%**

**Case  
Fatality Rate\* :  
0.07%**





\*Total positive cases In the past 7 days

\*CFR and positivity is for Past 7 days



ಬೃಹತ್ ಬೆಂಗಳೂರು ಮಹಾನಗರ ಪಾಲಿಕೆ  
Bruhat Bengaluru Mahanagara Palike



<b>Download BBMP Bulletin</b>	<a href="https://apps.bbmpgov.in/covid19/mediabulletin.php">https://apps.bbmpgov.in/covid19/mediabulletin.php</a>
<b>To register for vaccination :</b>	<a href="https://selfregistration.cowin.gov.in/">https://selfregistration.cowin.gov.in/</a>
<b>BBMP COVID19 Dashboard:</b>	<a href="https://apps.bbmpgov.in/covid19/">https://apps.bbmpgov.in/covid19/</a>
<b>Follow us on:</b>	 <a href="http://www.facebook.com/bbmp.comm1/">www.facebook.com/bbmp.comm1/</a>
	 <a href="https://twitter.com/BBMPCOMM">twitter.com/BBMPCOMM</a>
	  <a href="https://www.instagram.com/BBMPSplHealth">BBMPSplHealth</a>

Issued by:

Honorable Chief Commissioner, BBMP  
Special Commissioner Health & IT, BBMP  
MD, Bengaluru Smart City Limited

**THANK YOU !**

